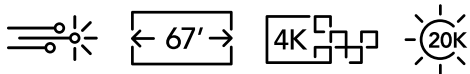


CP4420-RGB

Medium-screen auditoriums | Event cinema | Post production | Screening rooms

Advanced, yet affordable, DCI compliant cinema projection featuring Christie RealLaser™ technology for screens up to 67 feet wide



Key features:

- › **Ultra-fast processing** - HDMI 2.0 and 4x 12GB SDI inputs for 1.06G pixels per sec
- › **Long-lasting light source** - over 50,000 hours of optimal performance
- › **Enhanced Wavelength Diversity (EWD)** - utilising MPD technology to improve image quality on all screen types
- › **Low maintenance** - sealed optics for protection against dust ingress
- › **Hyper realism** - new system architecture that displays content without motion blur and artifacts
- › **Best-in-class operational efficiency** - 10.6 lumens per watt

CHRISTIE
RealLaser™

Advanced laser light source for accurate reproduction of DCI content

CineLife+™

Adds ultra high frame rate providing each eye 2K 120fps, 4K 120fps, 4K 3D 60fps

DIGITAL CINEMA CONFIGURATOR

Help find the right lens for your projector on our website



Specifications

Christie CP4420-RGB

Brightness	nominal	• 18,000 lumens at DCI white, up to 20,000 lumens (<25°C ambient) ¹
	lifetime	• >50,000 hours ²
Contrast ratio		• Up to 6000:1 ³ full field on/off
Digital micromirror device		• 1.38" Enhanced 4K 3-chip DMD DLP Cinema® • 4096x2160 (4K)
Color gamut	native gamut	• >95% of Rec 2020 coverage
Processing electronics		• Christie® CineLife+™ Series (Series-2 IMB compatible) ⁴ • HDMI 2.0 x2 • 4K120 fps ⁵ • 1G Ethernet x1 • 12G SDI x 4 • DisplayPort 1.2 x2 • SFP+ x1 • QSFP+ x 1r • Remote UI • Electronic Color Convergence (ECC)
Lens mount configuration		• Fully motorized Intelligent Lens System (ILS™)
Lenses		• HB and UHC: 1.13-1.66 / 1.31-1.85 / 1.45-2.17 / 1.63-2.71 / 1.95-3.26 / 2.71-3.89 / 3.89-5.43 / 4.98-7.69
Power input requirements		• Input A: 200-240 VAC @ 50-60Hz, 15A max • Input B (UPS input): 100-240VAC @ 50-60Hz, 10A max
Cooling		• Liquid pressurized/TEC, self-contained • Heat extraction optional
Power consumption		• 1890W, max DCI brightness, @25°C 6448 BTU/hr
Laser class		• Class 1 – Risk Group 3
Weight		• As installed: 285lbs max (130kg)
Dimensions (w/o lens)	size (LxWxH)	• 37.2 x 28.0 x 20.7" (944 x 711 x 525mm)
Accessories		• Rack mount pedestal • Rack mount pedestal adaptor • Extraction duct adaptor • Touch panel controller (optional) • Enhanced 4K HB and UHC lens suite available

¹ With existing high brightness cinema lens.

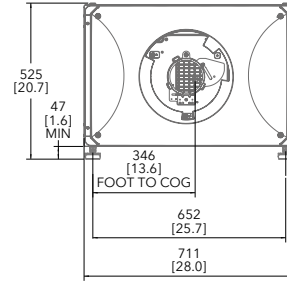
² Subject to variables specific to each installation. Please see Christie's laser best practices guide for more information.

³ With new UHC cinema lens.

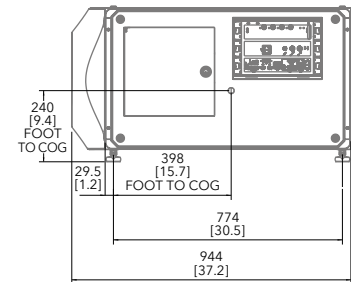
⁴ Supports legacy Series 2 IMBs. A list of supported versions is available upon request.

⁵ With the GDC SR-6400 IMB.

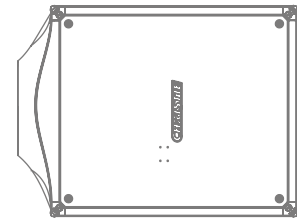
Front view



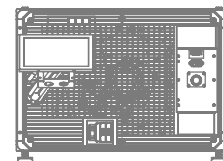
Side view



Top view



Back view



Corporate offices

Christie Digital Systems USA, Inc.
Cypress
ph: 714 236 8610

Christie Digital Systems Canada Inc.
Kitchener
ph: 519 744 8005

Worldwide offices

Australia
ph: +61 (0) 7 3624 4888

Brazil
ph: +55 (11) 2548 4753

China (Beijing)
ph: +86 10 6561 0240

China (Shanghai)
ph: +86 21 6030 0500

Colombia
ph: +57 (318) 477-3179

Eastern Europe
ph: +36 (0)1 47 48 138

France
ph: +33 (0) 1 41 21 44 04

Germany
ph: +49 221 99 512-0

India
ph: +91 (080) 6708 9999

Mexico
ph: +52 55 4744 1790

Singapore
ph: +65 6877 8790

South Korea
ph: +82 2 702 1601

Spain
ph: +34 91 633 9990

United Arab Emirates
ph: +971 (0) 4 503 6800

United Kingdom
ph: +44 (0) 118 977 8000

United States (Arizona)
ph: 602 943 5700

Independent sales consultant offices

Italy
ph: +39 (0) 2 9902 1161

Russia
ph: +7 (495) 930 8961

For the most current specification information, please visit christiedigital.com

Copyright 2021 Christie Digital Systems USA, Inc. All rights reserved. All brand names and product names are trademarks, registered trademarks or tradenames of their respective holders. Performance specifications are typical. Due to constant research, specifications are subject to change without notice.
CINE0144-CP4420-RGB-Datasheet-Jan-21-EN-US



CHRISTIE®