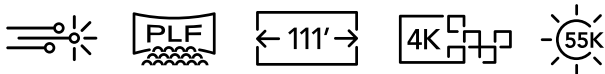


CP4450-RGB

Premium large format auditoriums | Advanced format cinema | Event cinema

World's first advanced format cinema projector featuring Christie RealLaser™ technology for screens up to 111 feet wide



Key features:

- › **Hyper realism** – new system architecture that displays content without motion blur and artifacts
- › **Ultra-fast processing** – HDMI 2.0 and 4x 12GB SDI inputs for 1.06G pixels per sec
- › **PLF performance** – brightest direct-coupled RGB laser cinema projector
- › **Long-lasting light source** – over 50,000 hours of optimal performance
- › **Low maintenance** – sealed optics for protection against dust ingress
- › **Best-in-class operational efficiency** – 10.5 lumens per watt

CHRISTIE
RealLaser™

Advanced laser light source for accurate reproduction of DCI content

CineLife+™

Adds ultra high frame rate providing each eye 2K 120fps, 4K 120fps, 4K 3D 60fps

TEMPERATURE CONTROL

External liquid cooling for optimal thermal efficiency



Specifications

Christie CP4450-RGB

Brightness	nominal	• Up to 55,000 lumens with HB lens, 42,000 lumens with UHC lens at DCI white (<25°C ambient)
	lifetime	• >50,000 ¹
Contrast ratio		• Up to 6000:1 full on/off with UHC lens, 2000:1 with standard HB lens
Digital micromirror device		• 1.38" Enhanced 4K 3-chip DMD DLP Cinema [®] • 4096x2160 (4K)
Color gamut	native gamut	• >95% Rec 2020 coverage
Processing electronics		• Christie [®] CineLife+™ Series (Series-2 IMB compatible) ² • HDMI 2.0 x2 • 4K120 fps ³ • 1G Ethernet x1 • 12G SDI x 4 • DisplayPort 1.2 x2 • SFP+ x1 • QSFP+ x 1r
Lens mount configuration		• Fully motorized Intelligent Lens System (ILS™)
Lenses		• HB and UHC: 0.9:1 (HB) / 1.13-1.66 / 1.31-1.85 / 1.45-2.17 / 1.63-2.71 / 1.95-3.26 / 2.71-3.89
Power input requirements		• Input A and Input B: 200-240 VAC @ 50-60Hz, 16A max each • UPS Input: 200-240 VAC @ 50-60Hz, Single phase, 10A max • Chiller: 200-240 VAC @ 50-60Hz, 20A max
Power consumption		• 5450W including chiller, max DCI brightness, @25°C 18,600 BTU/hr
Heat extraction		• No heat extraction necessary. CFM requirements when used: • Projector 350 CFM min • Chiller 1340 CFM min
Laser class		• Class 1 – Risk Group 3
Noise level		• <70 dBA @ 25°C
Environment		• Ambient temperature: 15-30°C • Humidity (non-condensing): 20-80% • Altitude: <3000 m
Dimensions (w/o lens)	size (LxWxH)	• Projector head: 61.1x28.0x22.0" (1551.1x710.6x559.6mm) • Projector pedestal: 53.9x29.8x29.1" (1369.8x756.0x739.4mm)
Weight		• Projector head: 385lbs (175kg)
Chiller dimensions		• (LxWxH): 26.38x18.5x35.0" (670x470x890mm); 202lbs (92kg) • Chiller hose: 33ft (10m)
Accessories		• Rack mount pedestal • 50Hz chiller • 60Hz chiller • Chiller setup kit plumbing • Coolant ⁴ • Chiller setup kit ducts

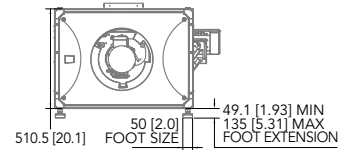
¹ Subject to variables specific to each installation. Please see Christie's laser best practices guide for more information.

² Supports legacy Series 2 IMBs. A list of supported versions is available upon request.

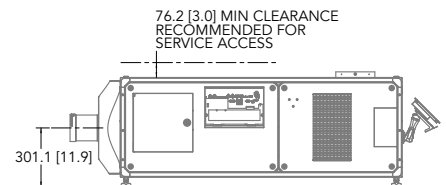
³ With the GDC-SR-6400 IMB.

⁴ 10L bottle of 702 coolant. Requires 3 bottles per projector.

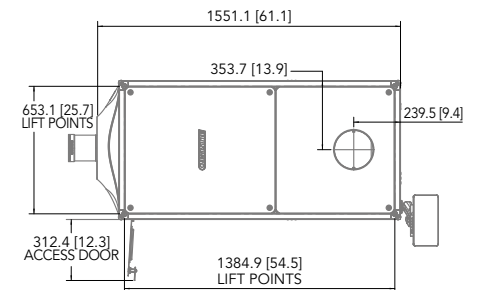
Front view



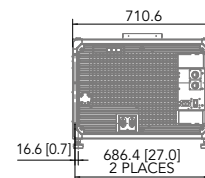
Side view



Top view



Back view



Corporate offices

Christie Digital Systems USA, Inc.
Cypress
ph: 714 236 8610

Christie Digital Systems Canada Inc.
Kitchener
ph: 519 744 8005

Worldwide offices

Australia
ph: +61 (0) 7 3624 4888

Brazil
ph: +55 (11) 2548 4753

China (Beijing)
ph: +86 10 6561 0240

China (Shanghai)
ph: +86 21 6030 0500

Colombia
ph: +57 (318) 477-3179

Eastern Europe
ph: +36 (0)1 47 48 138

France
ph: +33 (0) 1 41 21 44 04

Germany
ph: +49 221 99 512-0

India
ph: +91 (080) 6708 9999

Mexico
ph: +52 55 4744 1790

Singapore
ph: +65 6877 8790

South Korea
ph: +82 2 702 1601

Spain
ph: +34 91 633 9990

United Arab Emirates
ph: +971 (0) 4 503 6800

United Kingdom
ph: +44 (0) 118 977 8000

United States (Arizona)
ph: 602 943 5700

Independent sales consultant offices

Italy
ph: +39 (0) 2 9902 1161

Russia
ph: +7 (495) 930 8961

For the most current specification information, please visit christiedigital.com

Copyright 2020 Christie Digital Systems USA, Inc. All rights reserved. All brand names and product names are trademarks, registered trademarks or tradenames of their respective holders. Performance specifications are typical. Due to constant research, specifications are subject to change without notice.
CINE0081-CP4450-RGB-Datasheet-Jan-20-EN-US



CHRISTIE[®]